

COMBOYNE AGRICULTURAL & HORTICULTURAL ASSOCIATION INC.

Showground Road, (PO Box 79) Comboyne NSW 2429

ABN:69 557 889 471, PIC No: ND488111

Phone: 65504006; comboyneaandh@gmail.com

Rodney Fisher
President

Donna Lance
Secretary

Susan Fisher
Treasurer

proudly presents the

88th Comboyne Show

Saturday 28th February and Sunday 1st March 2026

PAVILION SCHEDULE

Art Pavilion

Art

Photography

Craft

Preserves

Baking

Produce Pavilion

Fruit

Vegetables

Flowers

Plants

Show Admission

Adults \$10

Children under 16 years free

Secretary: Donna Lance
Telephone: 0427 818 820
email: comboyneaandh@gmail.com

RULES & REGULATIONS

- All people wishing to compete for prizes in the Pavilion Sections must have their entries and entry forms to the pavilion as per each section in the schedule. No late entries will be accepted. Judging of exhibits in the Art and Produce pavilions will be on Friday 27th February 2026 except for classes nominated as "People's Choice".
- All exhibitors must submit their entry with a signed entry form for each section they enter.
- Children 16 years and under must enter using the separate schedule for Junior entries with an indemnity clause signed by a parent or guardian.
- All exhibits must be the bona fide property of, grown by, or the work of the exhibitor.
- The Committee will not be responsible for any damage or breakage or loss of any exhibit, and all people competing in all Sections do so at their own risk.
- The decision of the Stewards in case of any dispute will be final. No prize will be awarded in any class unless, in the Judge's opinion, the exhibit merits it. No tied prizes will be awarded.
- Championship Prizes are awarded based on a point score that will be calculated as follows: Category winner = 4 points; 1st =3 points, 2nd =2 points. In the event of a tied point score, an extra point for each exhibit entered by each championship contender will be factored into the tally.
- Exhibits can be claimed or sold by the exhibitor from 2:00 pm on Sunday 1st March 2026 after the entry form has been collected from the Steward and signed off.
- To claim prizes, exhibitors must collect their prize cards from the Steward and take them to the Showground Office for collection on Sunday 1st March 2026 from 2:00pm.
- All monies or vouchers not claimed by 1st April 2026 will be used to help finance next year's event.
- Protest made against any exhibits awarded a prize must be in writing and lodged with the Secretary within 24 hours of the award being made public, accompanied with a deposit of \$5 which shall be forfeited to the Association if the matter of the protest is considered frivolous by the Committee. If the protest is upheld by the Committee, the protester shall be summoned to meet the Committee at a time and place mentioned in the summons and if he or she fails to attend or make reasonable excuse for his or her absence, he or she shall forfeit his or her right to the prize. No appeal shall be entered into where there are no grounds of appeal other than the decision of the judges.
- The Committee reserve the right to add or delete any event or rearrange the program as required.
- To better achieve a high-quality art exhibition, the time frame for entering exhibits in the Art and Photography sections is Thursday 26th February 2026 from 1pm - 4pm or by prior arrangement with the Steward.
- Exhibitors who have a large quantity of entries in Plants, Fruit and Vegetables, may enter items that will keep fresh on Thursday 26th February 2026 from 1pm – 4pm or by prior arrangement with the Steward.
- Exhibitors entering the Cake decoration category 3, need to be entered on Thursday 26th February 2026 between 1pm and 4pm by ring 6550 4006, and be to the stewards by 12 noon Friday 27th February 2026 with entry.
- All Exhibitors must be left the pavilion by 12.15 pm Friday 27th February 2026 so Judging can start.

Name:

Section 1: FRUIT **Schedule and Entry Form (no entry fee)**

Stewards Peter Hurrell, Christine Kingsley, Jenny Atkins, David Sharp, Gill Drury

- Rules**
1. Entries must be as per the description.
 2. Entries are limited to three entries per class per exhibitor.
 3. Standard of each entry must be of such a standard as to be deemed saleable.
 4. **Exhibitors are not permitted in the pavilion whilst judging is underway. MUST BE OUT BY 12 Noon**
 5. Entries need to be presented ready for display (e.g., nuts on a dish)
 6. Exhibits must be grown by the exhibitor.
 7. Collections must be no larger than 600mm x 600mm.
 8. All stated weights must be correct.

Information 'AOV' means Any Other Variety.

Prizes 1st and 2nd prize cards for each class. Champion exhibit from each category awarded a \$20 voucher. Junior Award - \$5 cash first prize \$3 second prize for each class. Category winner \$10 Most successful exhibitor of this section (based on a point score) awarded a \$50 voucher or cash and rosette. To claim prizes, please take identification and winning card to the office after **2:00pm on Sunday 1st March 2026**

Entry To the Produce Pavilion from **1pm - 4pm Thursday 26 February 2026** and from **9am - 12 noon Friday 27th February 2026**. Entries are to be collected from the stewards and signed out below **after 2:00 pm on Sunday 1st March 2026**

Category One - Apples and Pears			Category Three - Citrus Fruit			Category Five - Other Categories		
Class	Description	Qty	Class	Description	Qty	Class	Description	Qty
1	3 x Delicious Apples		20	3 x Lemons		35		
2	3 x Jonathan Apples		21	3 x Bush Lemons		36		
3	3 x Granny Smith Apples		22	3 x Navel Oranges		37		
4	3 x Eating Apples		23	3 x Oranges - AOV		38	2x Tamarillos	
5	3 x Cooking Apples		24	3x Native Finger Limes		39	2 x Pomegranates	
6	Heaviest Apple		25	3x Limes – any variety		40	2 x Persimmons	
7	3 x Eating Pears		26	2x Grapefruit		41	3 x Figs	
8	3 x Baking Pears		27	3x Mandarins		42	Fruit - AOV- saleable unit	
9	3 x Nashi Pears		28	3x Citrus Fruit - AOV		43	Collection of Fruit - minimum 6 types	
10	3 x Quinces		29	Collection of Citrus Fruits				
11	2 x Avocados							
Category Two - Vine Fruits and Melons			Category Four - Nuts and Berries			Category Six – Junior - 16 Years and Under		
Class	Description	Qty	Class	Description	Qty	Class	Description	Qty
12	Isabella Grapes 100g min		30	Macadamia Nuts 200g		44	Collection of Fruit - minimum 6 types - display no larger than 600mm x 600mm	
13	Grapes – AOV 100g min		31	Pecan Nuts 200g		45	Biggest Apple - by weight	
14	3 x Kiwifruit		32	Walnuts 200g		46	Biggest Pear- by weight	
15	2 x Passionfruit - black		33	Nuts - AOV 200g				
16	2 x Banana Passionfruit		34	Dish of one variety of Berry-minimum 100g				
17	1 x Rockmelon							
18	1 x Watermelon							
19	1 Honey Dew Melon							

Exhibitor Entry Agreement

Sections 1 and 2: Fruit and Vegetables

I have read and understood the Comboyne Agriculture and Horticulture Association Show Rules and the rules pertaining to this section. I certify my entries are grown by the person named on the entry form. I understand that non-compliance with these rules may result in my entry being excluded from judging.

Signature:

I have collected my entries from the steward and checked they match those listed on the entry form.

Signature:

Name :

Section 2: VEGETABLES **Schedule and Entry Form (no entry fee) - signature overleaf**

Stewards Peter Hurrell, Christine Kingsley, Jenny Atkins, David Sharp, Gill Drury

- Rules**
1. Entries must be as per the description.
 2. Entries are limited to three entries per class per exhibitor.
 3. Standard of each entry must be of such a standard as to be deemed saleable.
 4. **Exhibitors are not permitted in the pavilion whilst judging is underway .Must be out by 12noon.**
 5. Entries need to be presented ready for display (e.g., herbs in a jar)
 6. Exhibits must be grown by the exhibitor
 7. Collections must be no larger than 600mm x 600mm.

Information 'AOV' means Any Other Variety.

Prizes: 1st and 2nd prize cards for each class. Champion exhibit from each category awarded a \$20 voucher.
 Junior Award - \$5 cash first prize \$3 second prize for each class.\$ 10 Category winner.
 Most successful exhibitor of this section (based on a point score) awarded a \$50 voucher or cash and rosette.
 To claim prizes, please take identification and winning card to the office after **2:00pm on Sunday 1st March 2026.**

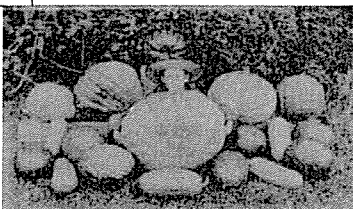
Entry To the Produce Pavilion from **1pm - 4pm Thursday 26thFebruary 2026** and from **9am - 12 noon Friday 27thFebruary 2026**. Entries are to be collected from the stewards and signed out below **after 2:00 pm on Sunday 1st March 2026.**

Category One - Potatoes and Tomatoes		
Class	Description	Qty
1	5 x Sebago Potatoes	
2	5 x Pontiac Potatoes	
3	5 x Potatoes - AOV (please state variety)	
4	Heaviest Potato	
5	3 x Sweet Potatoes	
6	Collection 3 or more varieties of Potato other than above – min of 3 of each varieties, state variety	
7	3 x Red Tomatoes	
8	3 x Tomatoes - AOV	
9	6 x Cherry Tomatoes	
10	Tomatoes on vine – any variety – at least 6 on vine	
11	Heaviest Tomato	
12	Egg Plant - any variety	

Category Two - Pumpkins		
Class	Description	Qty
13	1 x Qld Blue Pumpkin	
14	1 x Banana Pumpkin	
15	1 x Red Pumpkin	
16	1 x Green Pumpkin	
17	1 x Grey Pumpkin	
18	1 x Potkin Pumpkin	
19	1 x Butternut Pumpkin	
20	1 x Jarrahdale Pumpkin	
21	1 x Baby Blue Pumpkin	
22	1 x Jap Pumpkin	
23	1 x Pumpkin AOV	
24	1 x Gramma – Trombone	
25	1 x Gramma – AOV	

Special Pumpkins

26	1 x Giant Pumpkin Biggest by volume ***Special Prize \$50***	
----	--	--



Category Three – Other Cucurbits		
Class	Description	Qty
27	2 x Zucchini	
28	2 x Dumpling Squash	
29	2 x Pimply Squash	
30	1 x Hubbard Squash	
31	2 x Custard Squash	
32	2 x Table Queen Squash	
33	2 x Squash – AOV	
34	2 x Cucumber - long green	
35	2 x Cucumber - long white	
36	2 x Apple Cucumber-green	
37	2 x Apple Cucumber-white	
38	2x Chokos Green	
39	2x Chokos White	

Category Four - Corn & Green Veggies		
Class	Description	Qty
40	3 x Cobs Sweet Corn	
41	3 x Cobs of Maize	
42	1kg Shelled Maize	
44	3 Cobs of Corn on stalk	
45	Tallest Corn Stalk	
46	6x Pea Pods (any variety)	
47	6 x Dwarf Beans	
48	6 x Butter Beans	
49	6 x Runner Beans	
50	6 x Stalks Silver Beet	
51	6 x Stalks Swiss Chard - any colour	
52	Bunch of any other Leafy Vegetable – state variety	

Category Five - Herbs		
Class	Description	Qty
53	Bunch of Parsley	
54	Bunch of Sage	
55	Bunch of Rosemary	
56	Bunch of Thyme	
57	Bunch of Mint	
58	Bunch of Sweet Basil	
59	Bunch of Herb AOV (please state variety)	
60	Collection of Herbs - six varieties	
61	3 x Stalks of Rhubarb	

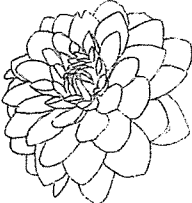
Category Six- Peppers and Onions		
Class	Description	Qty
62	6 x Chillies - Red	
63	6 x Chillies - Green	
64	6 x Chillies – AOV	
65	2 x Capsicums – red	
66	2 x Capsicums – Green	
67	2 x Capsicums – AOV	
68	2 x Garlic Knobs	
69	6 x Spring Onions or Shallots	
70	6 x Eschallots - brown	
71	2 x Onions - white	
72	2 x Onions - brown	
73	2 x Onions - red	
74	2x Leeks	

Category Seven - Other Categories		
Class	Description	Qty
75	3 x Radish – red or white	
76	3 x Beetroot	
77	3 x Carrots	
78	3x Parsnips	
79	3x Root Vegetables - AOV (please state variety)	
80	Collection of Vegetables Minimum of 6 varieties Display no larger than 600mm x 600mm	
81	Jar of Honey – (min 300g max 500g)	
82	1 dozen Chicken Eggs	
83	1 dozen Duck Eggs	

Category Eight- Junior – 16 Years & Under		
Class	Description	Qty
84	Collection of Vegetables Minimum 6 varieties Display no larger than 600mm x 600mm	
85	Collection of Herbs Minimum 6 varieties	
86	Biggest Beetroot - by weight	
87	Biggest Carrot - by weight	
88	1 dozen Chicken Eggs	

Name:	
Section 3: FLOWERS and PLANTS Schedule and Entry Form - no entry fee	
Stewards	Kay White, Narelle Handebo, Joan Redlich, Julie Foster
Rules	<ol style="list-style-type: none"> All exhibits in this section must be grown by the exhibitor unless stated otherwise. Commercially bought flowers and plants may only be used in the Arrangement classes 17 – 28 Each exhibit to be entered in one class only. Competitors may enter up to three exhibits per class. Entries are to be presented ready for display as appropriate (e.g.) in a container to hold water. Exhibitors must be out of Pavillion by 12 Noon
Information	NND means 'Not Necessarily Distinct' (i.e.) blooms may be of same variety. 'VARIETY' means a sort of species (e.g.) in roses - Radiance or Peace. 'KIND' means a genus of flower (e.g.) a rose or a carnation. Any embellishment includes natural embellishments (natural items other than flowers), plus artificial objects (e.g.) ribbons, pebbles. All Championship blooms will be chosen from exhibits. All exhibits will be judged under the standards of the Royal Horticultural Society of NSW. Prizes may not be awarded if the judge deems the exhibit unworthy.
Prizes	<p>1st and 2nd prize cards for each class. Champion exhibit from each category awarded a \$20 voucher or cash. Most successful exhibitor of this section (based on a point score) awarded a \$50 voucher or cash and rosette. Junior Award 1st Prize \$5, 2nd Prize \$3 for each class. Category winner \$10 cash</p> <p>Champion Exhibit of Show awarded a \$20 voucher and rosette.</p> <p>To claim prizes, please take your winning card to the office after 2:00 pm on Sunday 1st March 2026.</p>
Entries	<p>To the Produce Pavilion from 9am and no later than 12 Noon Friday 27th February 2026</p> <p>Pot Plants may be entered from 1pm - 4pm Thursday 26th February 2026.</p> <p>Entries are to be collected from the stewards and signed out below after 2:00 pm on Sunday 1st March 2026.</p> <p>All entre must be in before 12.noon and exhibitor must be left sheds by 12 noon so judging can start.</p>

Dahlia Measurements

DAHLIAS -STANDARD	METRIC	IMPERIAL (inches)	
Large Decorative	19 cm and over	7 ½ inches and over	
Medium Decorative	15.25 cm to under 19cm	6 – 7 ½ inches	
Large Hybrid Cactus	18cm and over	7 inches and over	
Medium Hybrid Cactus	15.25 cm and under 18cm	6 inches and under 7	
Small Hybrid Cactus	12cm and under 15.25cm	4 ¾ inches and under 6	
Exhibition Cactus	over 15.25cm	over 6 inches	
Charm Dahlias	over 7.5cm and under 12cm	over 3 inches and under 4 ¾	
Nymphae	not less than 12cm or over 15.25cm	not less than 4 ¾ inches or over 6	
Pom Poms	not less than 3.8cm or over 4cm	not less than 1½ inches or over 1 5/8	

Category One - Dahlias			Category Two - Arrangements		
Class	Description	Qty	Class	Description	Qty
1	1 x large or medium decorative		17	Small arrangement in a container - under 8" overall	
2	1 x small decorative		18	Mixed flowers –in a low container - under 8" high	
3	3 x small decorative - NND		19	Arrangement using one kind of flower	
4	1 x miniature decorative		20	Tall & Elegant Arrangement (2x as tall as it is wide)	
5	3 x miniatures decorative - NND		21	Foliage arrangement	
6	1 x large or medium hybrid Cactus		22	Interpretive – in accordance with a stated theme	
7	1 x small Cactus		23	Arrangement using only green and white	
8	3 x small Cacti - NND		24	Arrangement using three or less flowers	
9	1 x miniature Cactus		25	Arrangement of Australian natives - no restriction. Proteas and/or Leucadendrons may be used	
10	3 x miniature Cactus - NND		26	Arrangement reflected in a mirror	
11	1 x exhibition Cactus		27	Arrangement of fresh flowers in presentation box	
12	1 x Nymphae Dahlia		28	Novice Arrangement – “As You Like It” – Special prize - \$20 - No restriction to the arrangement, however, this class limited to exhibitors who have not won a prize for a flower arrangement in previous years.	
13	3 x Nymphae Dahlias - NND				
14	3 x Pom Pom - NND				
15	AOV of Dahlia - one bloom				
16	Collection of Dahlias – any number				

Category Three - Roses			Category Five - Collections (no more than 12 blooms)			
Class	Description	Qty	Class	Description	Qty	
29	1x Red Rose		52	Collection of Gerberas		
30	1x White Rose		53	Collection of Daisies - single cuts		
31	1x Pink Rose		54	Collection of Gladioli		
32	1x Yellow Rose		55	Any flower not listed - one kind – any number		
33	1x Rose - any other colour		56	Collection of Australian Natives - any number		
34	3x light coloured Roses		57	Collection of Proteas -any number		
35	Rose in 3 stages of bloom		Category Six – Pot Plants			
36	3x cuts David Austin Roses		Class	Description	Qty	
37	3x cuts Floribunda Roses		58	Maiden Hair Fern - coarse		
38	3x cuts Miniature Roses		59	Maiden Hair Fern - fine		
39	Collection of Roses – any number		60	Fern – other than above		
Category Four – Individual Types			61	Pot Plant- foliage only - no flowers		
Class	Description	Qty	62	Pot Plant - Flowering		
40	Container of Annuals – one kind – any number of blooms		63	Container of Cactus		
41	Container of Bulbous Flowers – any number of blooms		64	Container of Succulents		
42	Container of Perennial Flowers - one of a kind or a mixed collection		65	Cactus Garden		
43	Gladioli - single spike		66	Succulent Garden		
44	3x Carnations - NND		67	Bromeliad		
45	Single bloom - any kind other than Dahlia or Gladioli		68	Hanging Basket – any variety		
46	1x cut multi- flowering plant (e.g. - Lilium or Gum)		69	Orchid – any variety – must be in flower		
47	Container of Fuchsias		70	Novice Pot Plant - Special prize - \$20		
48	3 x cut Gerbera single			This class limited to exhibitors who have not won a prize for a pot plant in previous years		
50	3 x cut Gerbra double		Category Seven - Junior			
51	3 x Gerberas - AOV		Class	Description	12 Years and under	Qty
			71	An arrangement in a kitchen container		
			72	Pot Plant any type – any container		
			73	Decorated fruit or vegetable		
			74	Decorated saucer (sand should not be visible)		
			Class	Description	13 – 16 Years	Qty
			75	An arrangement in a kitchen container		
			76	Pot Plant any type – any container		
			77	Decorated Fruit or Vegetable		
			78	Decorated saucer (sand should not be visible)		

Exhibitor Entry Agreement

Section 3: Flowers and Plants

I have read and understood the Comboyne Agriculture and Horticulture Association Show Rules and the rules pertaining to this section. I certify my entries are made by the person named on the entry form.

I understand that non-compliance with these rules may result in my entry being excluded from judging.

Signature:

I have collected my entries from the steward and checked they match those listed on the entry form

Signature:

Name:

Section 4: PRESERVES **Schedule and Entry Form - No entry fee**

Stewards Julie Warwick, Barbara Ward

Rules

1. Competitors may enter up to three exhibits per class.
2. Competitors may enter only one exhibit from the one boiling or drying or fermenting process
3. The size of a jar or bottle is to be from 300g -500g or 300ml -500ml.
4. All items to be correctly labelled, with description as per schedule, date produced, and without any name.
5. All items must be produced between April of 2025 and February of 2026 and the label dated.

Prizes

1st and 2nd prize cards for each class. Champion exhibitor from each category (based on a point score) awarded a \$20 voucher or cash.
 Most successful exhibitor of Section 4 (based on a point score) awarded a \$50 voucher or cash and rosette.
 In the event of tied point scores, the Steward will refer to feedback notes from the judge to determine the champion exhibitor of the category or the section.
 To claim prizes, please take your winning card to the office **after 2:00 pm on Sunday 1st March 2026**

Entry

To the Art Pavilion **from 9am and no later than 12 Noon Friday 27th February 2026**
 Entries are to be collected from the stewards and signed out below **after 2:00 pm on Sunday 1st March 2026**

Category One: Marmalades and Jams			Category Three: Pickled Foods			Category Five: Sauces		
Class	Description	Qty	Class	Description	Qty	Class	Description	Qty
1	Jar Orange Marmalade		16	Jar Pickled Beetroot		33	Bottle Tomato Sauce	
2	Jar Lime Marmalade		17	Jar of Pickled Cucumber		34	Bottle Sweet Chilli Sauce	
3	Jar 3 Fruits Marmalade		18	Jar Pickled Onion		35	Bottle Plum Sauce	
4	Jar Jam from Australian Native Fruit (state variety)		19	Jar any other Pickled Food		36	Bottle Mint Sauce	
5	Jar Jam made from any variety of Stone Fruit		20	Jar Preserved Lemons		37	Bottle Sauce – any other variety	
6	Jar Jam made from any variety of Berry		21	Jar Pickled Olives		Category Six: Dried Foods		
7	Jar Fig Jam		Category Four: Condiments and Spreads			Class	Description	Qty
8	Jar Quince Jam		Class	Description	Qty	38	Jar Jerky – any variety	
9	Jar Jam - any other variety		22	Jar Mustard Pickle		39	Jar Dried Tomatoes	
Category Two: Jellies			23	Jar Lime Pickle		40	Jar Any Other Vegetable	
Class	Description	Qty	24	Jar Cucumber Pickle		41	Jar Dried Mushrooms	
10	Jar Jelly made from any Berry		25	Jar Relish		42	Jar Dried Oranges	
11	Jar Jelly from Australian Native Fruit (state variety)		26	Jar Chutney		43	Jar Any Other Dried Fruit	
12	Jar Guava Jelly		27	Jar Herb Pesto		Category Seven: Fermented Foods		
13	Jar Apple Jelly		28	Jar Olive Tapenade		Class	Description	Qty
14	Jar Quince Jelly		29	Jar Chilli Jam		44	Jar Sauerkraut	
15	Jar Jelly - any other variety		30	Jar Fruit Mince		45	Any Other Fermented Vegetable combination	
			31	Jar Fruit Paste		46	Jar Any Fermented Fruit	
			32	Jar Hummus		47	Loaf Sourdough Bread	
						48	Bottle Kombucha – any flavour	

Exhibitor Entry Agreement

Section 4: Preserves

*I have read and understood the Comboyne Agriculture and Horticulture Association Show Rules and the rules pertaining to this section. I certify my entries are made by the person named on the entry form.
 I understand that non-compliance with these rules may result in my entry being excluded from judging.*

Signature:

I have collected my entries from the steward and checked they match those listed on the entry form

Signature

name					
Section 5: Baking			Schedule and Entry Form (no entry fee)		
Steward	Joy Hurrell, Krista Williams				
Rules	<ol style="list-style-type: none"> 1. Competitors may enter up to three exhibits per class 2. Entries must be presented on a plate or on cardboard covered in aluminum foil to suit the size of the exhibit. 3. For iced cakes, the top only should be iced, not sides. 4. No paper patty pan cases are to be used (unless stated). 5. Dummy (block) or foam bases can be iced or decorated in place of real cakes in classes 16 – 19. 6. PERMITTED ELEMENTS: Edible components such as coconut ,sugar ,gelatine and piping gel. 7. All entries must be the bona fide work of the exhibitor and must be hand work only. 8. No computer imaging is to be used. 9. Non-edible glue must not be used. 10. The judge's decision is final. 11. Entry form in class16-19 must be entered by Thursday 26th February between 1pm to 4pm or Ph 02 65504006 then the entry can be delivered to pavilion between 9.00 am and 12 noon 27th February 2026 				
Prizes	1 st and 2 nd prize cards for each class. Champion exhibitor from each category (based on point score) award \$20 voucher. Junior award-\$5cash first prize \$3 cash second for each class. Most successful exhibitor of section (based on point score) awarded \$50 voucher or cash and rosette. In the event of tied point stewards will refer to judge's feedback notes to determine the champion exhibitor of the category section. To claim prizes, please take your winning card to the office after 2:00pm Sunday 1 st March				
Entries	To the Art Pavilion from 9am and no later than 12 noon Friday 27 th February 2026 Entries are to be collected directly from the stewards and signed out below after 2.00pm Sunday 1 st March 2026				
Category One: Scones and Muffins			Category Four: Biscuits, Slices and small Cakes		
Class	Description	Qty	Class	Description	Qty
1	Plate of 4 x Plain Scones		20	4 x Shortbread Biscuit	
2	Plate of 4 x Pumpkin Scones		21	4 x Anzac Biscuits	
3	Plate of 4 x Muffins - Sweet		22	4 x Jam Drops Biscuits	
4	Plate of 4 x Muffin - Savory		23	4 x Butterfly Cakes	
Category Two : Cakes			24	4 x Small Sweet Pastry Tarts	
Class	Description	Qty	25	4 x Lamingtons (4cm x4cm)	
5	Chocolate Cake – iced		26	4 x Mushrooms	
6	Plain Sponge -filled -not iced		Category Five: Junior		
7	Orange Cake – iced		Class	Description 12 years and Under	Qty
8	Carrot Cake – iced		27	4 x Plain Biscuits	
9	Date Loaf		28	4 x Jam Drops Biscuits	
10	Banana Cake – iced		29	4 x Anzac Biscuits	
11	Plain Cake – not iced		30	4 x Fruit Slice – not iced	
12	Fruit Cake – not iced		31	Plain Cake – not iced	
13	Sultana Cake		32	Chocolate Cake -not iced x p	
14	Humming Bird Cake - iced		33	4 x Chocolate Chip Biscuits	
Category Three: Cake Decoration			Class	Description 13 – 16 Years	Qty
Class	Description	Qty	34	4 x Savoury Muffins-cooked in muffin tins	
16	Birthday Cake – Butter icing or Frosting		35	4 x Cup Cakes – Cooked in patty paper decorated	
17	Birthday Cake – Royal icing and Fondant		36	Chocolate Cake – not iced	
18	Wedding Cake		37	4 X Anzac Biscuits	
19	Themed cake – Any themed cake		38	Plain Cake – noticed	
Category Seven : Agricultural Society Council of nsw			39	4 x Jam Drops Biscuits	
Class	Description	QTY	40	Plate of 4 x Plain Sconce	
15	RICH FRUIT CAKE COMPETION see over page for recipe(special prize \$50)		Category Six: Men's Chocolate Cake Challenge		
			Class	Description Cake	Qty
			41	1 x Chocolate Cake -iced (as per recipe)	

Exhibitor Entry Agreement

Section 5: Baking

I have read and understood the Comboyne Agriculture and Horticulture Association Show Rules and the rules pertaining to this section. I certify my entries are made by the person named on the entry form.

I understand that non-compliance with these rules may result in my entry being excluded from judging.

Signature:

I have collected my entries from the steward and checked they match those listed on the entry form

Signature:

RAS/AgShows NSW Rich Fruit Cake Competition

Here is what you need (Ingredients):	Here is what you do (Recommend Method)
250g (8oz) sultanas 250g (8oz) chopped raisins 250g (8oz) currants 125g (4oz) chopped mixed peel 90g (3oz) chopped red glace cherries 90g (3oz) chopped blanched almonds 1/3 cup sherry or brandy 250g (8oz) plain flour 60g (2oz) self-raising flour ¼ teaspoon grated nutmeg ½ teaspoon ground ginger ½ teaspoon ground cloves 250g (8oz) butter 250g (8oz) soft brown sugar ½ teaspoon lemon essence OR finely grated lemon rind ½ teaspoon almond essence ½ teaspoon vanilla essence 4 large eggs.	Mix together all the fruits and nuts and sprinkle with the sherry or brandy. Cover and leave for at least 1 hour, but preferably overnight. Sift together the flours and spices. Cream together the butter and sugar with the essences. Add the eggs one at a time, beating well after each addition, then alternately add the fruit and flour mixtures. Mix thoroughly. The mixture should be stiff enough to support a wooden spoon. Place the mixture into a prepared square 20cm x 20cm (8" x 8") tin and bake in a slow oven for approximately 3½ - 4 hours. Allow the cake to cool in the tin. Note: To ensure uniformity and depending upon the size, it is suggested the raisins be snipped into 2 or 3 pieces, cherries into 4-6 pieces and almonds crosswise into 3-4 pieces.
Prize money & Awards are sponsored by AgShows NSW. Shows and Groups should pay the prize money in cash or similar method directly to their winners, then and apply to AgShows NSW for reimbursement.	
Winners at local competitions are to each receive a prize of \$25. And will be required to bake a second "Rich Fruit Cake" to compete in the Group Final to be conducted by each of the fourteen Groups of AgShows NSW.	
The winner of Comboyne Show will receive an additional cash prize of \$25 + rosette.	
The fourteen winners at Group level are to receive a cash prize of \$50 and will be required to bake a third "Rich Fruit Cake" for the Final judging at the Royal Easter Show in 2026 NSW State Finalists are to receive a prize of \$100 and be awarded the AgShows NSW Plaque.	
Note: In any year an individual competitor may participate in only one Group Final representing one Agricultural Show and, consequently, may represent only one Group in the subsequent State Final.	

NAME.		
Category 6: Men's Chocolate Cake Challenge		
Class	Description	QTY
41	1 x Chocolate Cake -iced (as per recipe)	

Men's Cake Challenge

- ▶ The following recipe is compulsory for all entrants in this class.
- ▶ All entries must be the work of the male exhibitor.

CHOCOLATE CAKE

125g butter, softened
 1 teaspoon vanilla extract
 1 1/4 cup (275g) caster sugar
 2 eggs
 1 1/3 cup (200g) self-raising flour
 1/2 cup (50g) cocoa powder
 2/3 cup (160ml) water

ICING

90g dark eating chocolate, chopped coarsely
 30g butter
 1 cup (160g) icing sugar
 2 tablespoons hot water

Preheat oven to 180°C/160°C fan-forced. Grease deep (8") 20cm-round cake tin; line with baking paper.

Beat butter, extract, sugar, eggs, sifted flour and cocoa, and the water in large bowl with electric mixer on low speed until ingredients are combined. Increase speed to medium; beat about 3 minutes or until mixture is smooth and paler in colour.

Spread mixture into pan; bake about 1 hour. Stand cake 20 minutes; turn onto wire rack to cool, bottom side down.

Meanwhile, for chocolate icing, melt chocolate and butter in small heatproof bowl over small saucepan of simmering water; gradually stir in sifted icing sugar and the hot water, stirring until icing is spreadable. When cake is cooled, remove paper. Spread cake with icing.

Exhibitor Entry Agreement

Section 5: Baking

I have read and understood the Comboyne Agriculture and Horticulture Association Show Rules and the rules pertaining to this section. I certify my entries are made by the person named on the entry form.

I understand that non-compliance with these rules may result in my entry being excluded from judging.

Signature:

I have collected my entries from the steward and checked they match those listed on the entry form

Signature:

Name: _____

Section 7: CRAFT **Schedule and Entry Form (no entry fee)**

Stewards Wendy Duffy, Trish Sanders

Rules

1. Exhibits must be unwashed, unused, and completed within the past two years (or within the past year for the RAS/AgShows NSW Wool Article/Garment Competition).
2. All items must not have been entered in a previous Comboyne Show.
3. Competitors can enter up to three exhibits per class

Prizes

1st and 2nd prize card for each class. Champion exhibit (selected by judge) from each category awarded \$20 voucher or cash. Most Successful Exhibitor of Section 7 (based on a point score) will be awarded a \$50 voucher or cash and rosette. In the event of tied point scores, the steward will refer to feedback notes from the judge to determine the champion.

Junior Award -\$5 first prize \$3 second prize each class. Category winner \$10 cash.

To claim prizes, please take identification and winning card to the office **after 2pm on Sunday 1st March 2026.**

Entry

To the Art Pavilion **from 8am** and no later than **12 Noon Friday 27th February 2026.**

Entries are to be collected from the stewards and signed out below **after 2:00 pm on Sunday 1st March 2026**

Category One: Knitted Articles

Class	Description	Qty
1	Baby or Child Garment – single item	
2	Baby or Child Garment – 2-piece or 3-piece set	
3	Adult Garment – single item, eg vest, cardigan, etc	
4	Rug or Throw - for bed	
5	Knitted – centerpiece, table topper, etc	
6	Any other Knitted Item (eg) hat, decorative piece, tea cosy, toy, coat-hanger cover, etc	

Category Two: Crocheted Articles

Class	Description	Qty
7	Baby or Child Garment – single item	
8	Baby or Child Garment – 2-piece or 3-piece set	
9	Adult Garment - single item eg, vest, cardigan, etc	
10	Rug or Throw - for bed	
11	Crocheted – duchess set, doily, centerpiece, etc	
12	Any Other Crocheted Item eg hat, decorative piece, tea cosy, toy, coat-hanger cover, etc	
13	<i>Crocheted Articles-Lap, knee or baby rug, shawl/scarf</i>	

Category Three: Sewn Articles

Class	Description	Qty
14	Embroidery – hand embroidered	
15	Embroidery – machine embroidered	
16	Cross Stitch – any item	
17	Tapestry – any item framed or unframed	
18	N/A	
19	N/A	
20	Tailored Garment hand or machine sewn	
21	N/A	
22	Any other Sewn Item (eg) hat, decorative piece, tea cosy, toy, coat-hanger cover, etc	

Category Four: Patchwork Articles

Class	Description	Qty
23	Quilt – machine or hand quilted by exhibitor	
24	Quilt – quilted by professional	
25	Any other Patchwork item, eg clothing, placemats, etc	

Category Five: AgShows NSW Woollen Article/Garment Competition

Class	Description	Qty
26	Three Wool Articles and/or Garments that may or may not be related to each other. – Comboyne, District and State Competition – \$20 special Comboyne prize Read rules overleaf	

Category Six: Textile Craft

Class	Description	Qty
27	Wall Hanging - any medium	
28	Soft Furnishing – any medium eg cushion lampshade, curtain	
29	Item Made from Hand-Spun Natural Fibre eg wool, cotton, alpaca, possum	
30	Bag – any medium	
31	String Craft Item made by Macramé, Knotting or Weaving	

Category Seven: Hand Crafted Article

Class	Description	Qty
32	Jewellery item – any medium	
33	Beaded Item – knitted or crocheted	
34	Beaded Item – any other process	
35	Hand-crafted Item made from recycled materials	
36	Hand-crafted Item made from wood or metal	
37	Hand-crafted Wooden Furniture Item (maximum size 1 cubic metre)	
38	Hand-crafted Item made from any other material	
39	Hand-dyed Textile Item	
40	Hand-painted Textile Item	

Category Eight: Paper Craft

Class	Description	Qty
41	Scrapbook Album (minimum 6 pages)	
42	Hand-made Paper (recycled materials)	
43	Hand-made Greeting or Gift Card including quilling, pop-up, origami	

Category Nine: Junior

Class	Description	12 Years and Under	Qty
44	Any Hand-made Textile Item		
45	Any Paper Craft Item		
46	Any Item Made from Wood or Metal		
47	Hand Painted Item (Folk Art or similar)		
48	Diorama		
49	String Craft Item made by Macramé, Knotting or Weaving		

13 to 16 Years

Class	Description	Qty
50	Any Hand-made Textile Item	
51	Any Paper Craft Item	
52	Decorated Box	
53	Diorama	
54	Any Item Made from Wood or Metal	
55	Hand Painted Item (Folk Art or similar)	

Exhibitor Entry Agreement

Section 7: Craft

I have read and understood the Comboyne Agriculture and Horticulture Association Show Rules and the rules pertaining to this section. I certify my entries are made by the person named on the entry form.

I understand that non-compliance with these rules may result in my entry being excluded from judging.

Signature:

I have collected my entries from the steward and checked they match those listed on the entry form.

Signature:

AgShows NSW Woollen Article/Garment Competition

CLASS: THREE DIFFERENT TYPES OF WOOL ARTICLES AND/OR GARMENTS

1. For the purpose of this competition the following definitions apply **a) Garment:** an item that can be worn e.g. dress, jacket, scarf, hat **b) Article:** a utility item that is not worn but can be used in the home eg. blanket; with an outfit eg. bag; for amusement eg. toy; as a decoration eg. picture etc. **c) Three Different Types:** the 3 items in an entry must differ from each other in terms of their construction technique and/or their purpose eg.1 a knitted jumper, blanket and tea cosy OR eg.2 a knitted tea cosy, a crocheted tea cosy or a felted tea cosy OR eg.3 a knitted jumper, a knitted blanket and a crocheted blanket.

2. All articles/garments must contain a minimum of 80% sheep wool, excluding lining, to qualify for competition.

3. Exhibits (articles/garments) may be knitted, crocheted, sewn, felted etc and must be hand crafted (use of sewing machine is permitted).

4. **A sample of the yarn**, fabric or fibre with label **must be attached** to each item making up the exhibit. If a label is not available such as in the case of a hand-spun or felted item, a handwritten label with relevant details and sample will suffice.

5. An exhibit in this competition may consist of the work of one individual or a group of individuals, or an organization.

6. All three article/garments must have been completed **within the 12 months prior to the local show** (February 28th & 1st March 2026) and made by the exhibitor/s.

Directions for winners of Comboyne Show available from Comboyne A & H Association Show Coordinator – Donna Lance

Judging Criteria for Craft at Comboyne Show

Knitted and Crocheted articles

- Quality of workmanship
- Neatness of stitches, front and reverse sides
- Appropriate pliability of fabric to fit the purpose of the item (needle size/yarn weight)
- Originality of design or faithfulness to standard known design or pattern
- Quality and suitability of yarn, thread or other materials (textile, weight, texture)
- Colour choice and combination
- Neatness of sewn in ends
- Creativity in problem-solving, including fixes or re-works
- Matching of pattern elements such as stripes or Fair Isle designs
- Finishing touches (such as fancywork embroidery or Swiss darning embellishments)
- Overall presentation
- For baby garments:
 - adequate and even armhole and sleeve space
 - absence of loose ribbon, cord and other hanging hazards
 - firm fastening of buttons and other choking hazards
 - softness and pliability of inside seams, including armholes

* Attach Yarn labels and sample of yarn where possible

All articles

- Harmony at first impression
- Quality of workmanship
- Evidence of good technique
- Neatness of finish
- Originality of design
- Selection of materials appropriate for the purpose
- Imaginative use of materials
- Colour choice and combination
- Balance, line, form and shape
- Texture
- Overall presentation

NAME.		
Category 10: Agricultural Societies Council of NSW Competition		
Class	Description	QTY
56	Patchwork Quilted Competition (Rules shown above)	

AgShows NSW QUILTED PATCHWORK COMPETITION

Rules & Regulations

Celebrate the artistry, creativity and skill of our talented patchworkers in the Group Final of the AgShowsNSW Quilted Patchwork Competition. This event is a showcase of beautiful, handcrafted pieces—ranging from bags and table runners to cushions and quilts—all designed within a 1m x 1m square.

Please note, this is a Group Final competition and is not a qualifier for the Sydney Royal Easter Show. Winners will be recognised and rewarded at Group level, with prize money proudly sponsored by AgShows NSW.

This competition is a wonderful opportunity to highlight the talent and dedication of exhibitors across our communities—bringing patchwork lovers together to celebrate creativity and craftsmanship.

1. The exhibit needs to fit within a square (1m x 1m) maximum size
2. An item using patchwork and quilting eg. Bag, table runner, cushion cover, quilt.
3. Framed and board mounted exhibits not permitted.
4. Must be either hand and/or machine pieced and quilted.
5. Minimal Embellishments. Small amount only not to overpower patchwork.
6. Each exhibit entered must be the bona fide work of the exhibitor.
7. An exhibit having won at a Show will compete at a Group Final.
8. An exhibit is only eligible to represent one Society at Group level.
9. If, for any reason, a winner is unable to compete at Group level then the second placegetter is eligible to compete.
10. All work to have been completed in the last twelve (12) months prior to its entry at a local show.
11. An exhibit that has previously competed at Group level is not eligible to compete again.
12. If this class is not scheduled or attracts no entries at a local show, the Chief Pavilion Steward in consultation with the appropriate Pavilion Section Judges, may select a suitable quilted patchwork and, with the exhibitor's permission, enter them in the Group judging as an exhibit representing the particular Society concerned.
13. Group Final location and date is to be determined by the Group. It is the responsibility of either the exhibitor or the Show Society to ensure the quilted patchwork is delivered on Judging Day and collected in an appropriate time frame after the competition.

Exhibitor Entry Agreement	
Section 7:	Craft
<i>I have read and understood the Comboyne Agriculture and Horticulture Association Show Rules and the rules pertaining to this section. I certify my entries are made by the person named on the entry form.</i>	
<i>I understand that non-compliance with these rules may result in my entry being excluded from judging.</i>	
Signature:	
<i>I have collected my entries from the steward and checked they match those listed on the entry form.</i>	
Signature:	

NAME.			
Category 9: Special Junior Craft Entry LEGO			
Class	Description - 12 years and under	Qty	Age
57	Lego any design in large to small blocks		
Class	Description – 13 to 16 years	Qty	Age
58	Lego any design in medium to small blocks		

Rules

1. Lego to be no more than 32cm x 32cm wide (it can be less)
2. To be made by the person entering it.

Exhibitor Entry Agreement

Section 7: Craft

I have read and understood the Comboyne Agriculture and Horticulture Association Show Rules and the rules pertaining to this section. I certify my entries are made by the person named on the entry form.

I understand that non-compliance with these rules may result in my entry being excluded from judging.

Signature:

I have collected my entries from the steward and checked they match those listed on the entry form.

Signature:

Name:		
Section 8: ART		Schedule and Entry Form (no entry fee)
Stewards	Rosena McMillian, Anne McMillian	
Rules	1. Painting must be completely dry. 2. Work to be framed and ready for hanging. 3. Unframed work on stretched canvas will be accepted providing the work is ready to hang. 4. Work entered in Junior categories is to be mounted on cardboard with a 25mm border. 5. Work previously exhibited in the Comboyne Show will not be accepted. 6. Competitors may exhibit up to three entries per class apart from Juniors who may exhibit only one per class 7. Class number, category, artist's name and contact information are to be included on the back of each piece.	
Prizes	1 st and 2 nd prize cards for each class. First prize winner for each class awarded a \$20 voucher or cash. Junior Award -\$5 cash first prize \$3 cash prize second for each class. Category winner \$10 cash Most Successful Exhibitor of Section 8 (based on a point score) will be awarded a \$50 voucher or cash. People's Choice Open Art Award – (by public vote) \$50.00 voucher or cash. To claim prizes, please take identification and winning card to the office after 2pm Sunday 1st March 2026	
Entry	Open and Junior Art to the Art Pavilion from 1pm - 4pm THURSDAY 26th February 2026 (or by prior arrangement) Please note that NO ENTRIES WILL BE ACCEPTED ON FRIDAY. Entries are to be collected from the stewards and signed out below after 2pm on Sunday 1st March 2026 **Note** 10% Commission will apply to all works sold at the Show. We have eftpos facilities available.	
Category One: Open Traditional Art		
Class	Description	Qty
1	Painting in Oil or Acrylic - any subject	
2	Painting in Watercolour or work on paper - any subject	
3	Pencil or Ink Drawing - any subject	
4	Drawing in Pastels - any subject	
5	Comboyne Scene - any medium	
Category Two: Open Contemporary Art		
Class	Description	Qty
6	Painting in Oil or Acrylic - any subject	
7	Painting in Watercolour or work on paper - any subject	
8	Pencil or Ink Drawing - any subject	
9	Drawing in Pastels - any subject	
10	Comboyne Scene - any medium	
Category Three: Junior Art		
Class	Description	Qty
11	Painting - 8 Years and Under	
12	Drawing - 8 Years and Under	
13	Painting - 9 -12 Years	
14	Drawing - 9 -12 Years	
15	Painting - 13 – 16 Years	
16	Drawing - 13 – 16 Years	
Junior Art may be any subject and any medium		
Exhibitor Entry Agreement		
Section 8:	Art	
<i>I have read and understood the Comboyne Agriculture and Horticulture Association Show Rules and the rules pertaining to this section. I certify my entries are made by the person named on the entry form.</i> <i>I understand that non-compliance with these rules may result in my entry being excluded from judging.</i>		
Signature:		
<i>I have collected my entries from the steward and checked they match those listed on the entry form.</i>		
Signature		

Name:																																																	
Section 9: PHOTOGRAPHY																																																	
Schedule and Entry Form (no entry fee)																																																	
Stewards	Pat Bruton, Anne Murry and Lorraine Williams																																																
Rules	1. Amateur photographers only may exhibit. 2. Competitors may exhibit up to three entries per class. 3. Photographs are to be mounted on black cardboard with a 25mm border surrounding the image. 4. Photographs are to be no smaller than 100mm x 150mm and no larger than 300mm x 200mm 5. Class number, photographer's name and contact information are to be included on back of each photograph.																																																
Criteria	All entries will be judged based on picture quality, lighting, sharpness of subject and how well it captures and tells the story of the subject.																																																
Prizes	1 st and 2 nd prize cards for each class. First prize winner for each class awarded a \$20 voucher or cash. Junior Award -\$5 cash first prize \$3 cash prize second for each class. Category winner \$10 cash Sunday 1st March 2026.																																																
Entry	To the Art Pavilion from 1pm - 4pm Thursday 26th February 2026 (or by prior arrangement) Please note that NO ENTRIES WILL BE ACCEPTED ON FRIDAY. Entries are to be collected from the stewards and signed out below after 2:00 pm on Sunday 1st March 2026																																																
Category One: Open Photography (colour, black and white or monotone)																																																	
Class	Description																																																
1	Portraits - Individual with head and shoulder with focus on the eyes (use portrait photo orientation). Family or group portraits with everyone in focus (either portrait or landscape orientation). Attention paid to background.																																																
2	People in Action - Including sports and photojournalism.																																																
3	Landscapes and Nature - Capture the unspoilt pristine landscape from the ocean to the mountains of the Mid North Coast and hinterland. Can include bridges.																																																
4	Wildlife and Birds - Capture Australian wildlife including feral animals but not pets.																																																
5	Travel - Taken outside the Mid North Coast. camping holiday, city trip or visit to another culture.																																																
6	Architectural Landscape - Create a landscape scene, with an emphasis on rural and historical buildings. This class may also include modern architecture with significant design features.																																																
7	Rural Life - In and around a rural community. Life on the farm, with emphasis on rural storytelling.																																																
8	Arts and Music - An artist at work or a musician practicing or performing.																																																
9	Artistic Expression - Using the background and the subject, convey an artistic mood, eg. silhouette. This class includes but is not restricted to digital manipulation and montage.																																																
10	Macro or Close-up - Including but not restricted to insects and flowers.																																																
Hints																																																	
What ideas are behind the image? How well does the image communicate these ideas? Are the technical aspects appropriate? Does the image tell us anything about the artist? What is its value as a statement?	Category Two: Junior Photography <table border="1"> <thead> <tr> <th>Class</th> <th>Description</th> <th>12 Years and Under</th> <th>Qty</th> <th>Class</th> <th>Description</th> <th>13 – 16 Years</th> <th>Qty</th> </tr> </thead> <tbody> <tr> <td>11</td> <td>Portraits and People</td> <td></td> <td></td> <td>16</td> <td>Portraits and People</td> <td></td> <td></td> </tr> <tr> <td>12</td> <td>Landscapes and Nature</td> <td></td> <td></td> <td>17</td> <td>Landscapes and Nature</td> <td></td> <td></td> </tr> <tr> <td>13</td> <td>Rural life</td> <td></td> <td></td> <td>18</td> <td>Artistic Expression</td> <td></td> <td></td> </tr> <tr> <td>14</td> <td>Animal Portrait</td> <td></td> <td></td> <td>19</td> <td>Animal Portrait</td> <td></td> <td></td> </tr> <tr> <td>15</td> <td>Sport and Racing</td> <td></td> <td></td> <td>20</td> <td>Sport and Racing</td> <td></td> <td></td> </tr> </tbody> </table>	Class	Description	12 Years and Under	Qty	Class	Description	13 – 16 Years	Qty	11	Portraits and People			16	Portraits and People			12	Landscapes and Nature			17	Landscapes and Nature			13	Rural life			18	Artistic Expression			14	Animal Portrait			19	Animal Portrait			15	Sport and Racing			20	Sport and Racing		
Class	Description	12 Years and Under	Qty	Class	Description	13 – 16 Years	Qty																																										
11	Portraits and People			16	Portraits and People																																												
12	Landscapes and Nature			17	Landscapes and Nature																																												
13	Rural life			18	Artistic Expression																																												
14	Animal Portrait			19	Animal Portrait																																												
15	Sport and Racing			20	Sport and Racing																																												
Exhibitor Entry Agreement																																																	
Section 9:	Photography																																																
<i>I have read and understood the Comboyne Agriculture and Horticulture Association Show Rules and the rules pertaining to this section. I certify my entries are taken by the person named on the entry form. I understand that non-compliance with these rules may result in my entry being excluded from judging.</i>																																																	
Signature:																																																	
<i>I have collected my entries from the steward and checked they match those listed on the entry form</i>																																																	
Signature:																																																	